



Product Specification



COB All-In-One Solution (V2)

Product Version: V2

Date: 20230504

This product is efficiently integrated the display and control functions for LED screen, which applied in conference Room, TV studio, school and training agency.

COB All-In-One Solution LED screen offers smoother interactive operations, flexible system integration, and easier daily maintenance. It also supports the addition of APP and APK software, breaking through the limitations of traditional conference display devices such as small size, low brightness, and poor image quality.

Adopted COB technology effectively improves the reliability, light color and protection performance of LED display. It can effectively achieve waterproof, dust proof, oxidation resistance, and static electricity prevention. Customized brightness to meet the needs of different applications.


2. Product Features

- Based on ANDROID deep customization, reserved OPS host control interface
- Surface light source, good consistency, no sensitive moire pattern, and viewing angle up to 170 degrees
- High refresh 3840Hz, high grayscale level 18Bit (software on+2Bit)
- Waterproof, dust proof, anti oxidation, anti-static, anti impact, high stability
- Supports 32 dots infrared touch
- With remote control, human-machine interaction can be carried out, including common operations such as volume adjustment, brightness adjustment, source switching, and power on/off.
- Supports local and online high-definition video playback, supports 4K HDR format video decoding and playback
- Dual wireless network card design, capable of simultaneously accessing WiFi and enabling wireless hot-spots
- Supports Bluetooth 4.0, compatible with commonly used peripherals such as Bluetooth mouse, Bluetooth keyboard, Bluetooth audio, etc
- Support for built-in and external 3.5mm audio interfaces
- Supports multi platform wireless projection for Windows, Mac, iPhone/iPad, and Android, and supports HTML5 browser
- Compatible with mainstream conference peripherals, including cameras, speakers, laser pens, etc.

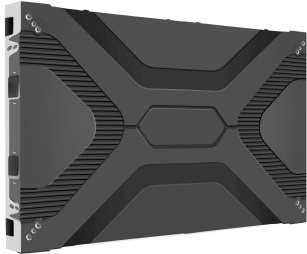
3、 Product Introduction



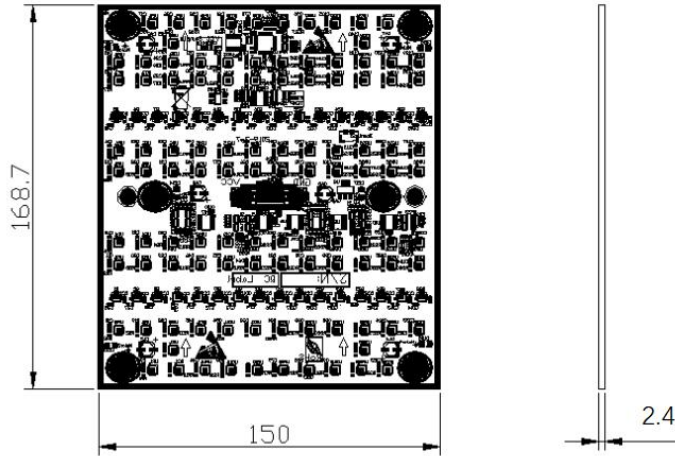
3.1. Module Specification

| Item | Specification | Module Picture |
|---------------|---|---|
| Series | COB Module |  |
| Pitch | 0.9375mm, 1.25mm, 1.5625mm, 1.875mm, 2.34mm | |
| Resolution | 160×180, 120×135, 96×108, 80×90, 64×72 | |
| Module Size | 150mm x168.75mm (W x H) | |
| Module Weight | 150g±10g | |

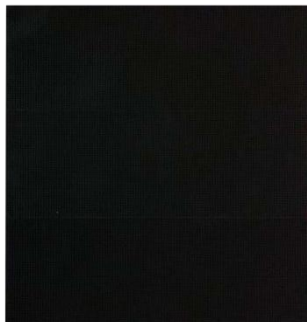
3.2. Cabinet Specification

| Item | Specification | Cabinet Picture |
|------------------|---|---|
| Cabinet Material | Die-casting aluminum |  |
| Pixel Pitch | 0.9375mm, 1.25mm, 1.5625mm, 1.875mm, 2.34mm | |
| Resolution | 640×360, 480×270, 384×216, 320×180, 256×144 | |
| Cabinet Size | 600mm x 337.5mmx32.5mm (W x HxD) | |
| Cabinet Weight | 4.3Kg | |

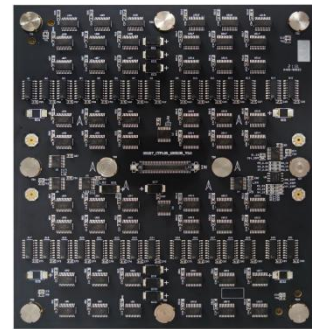
4. Module Dimension Structure



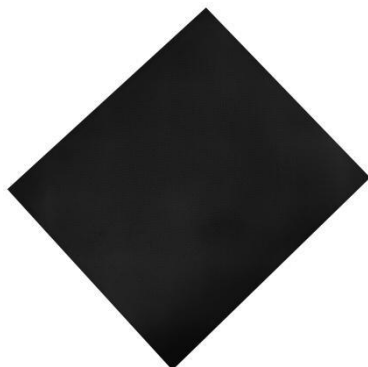
5. Module Picture



Front View



Back View

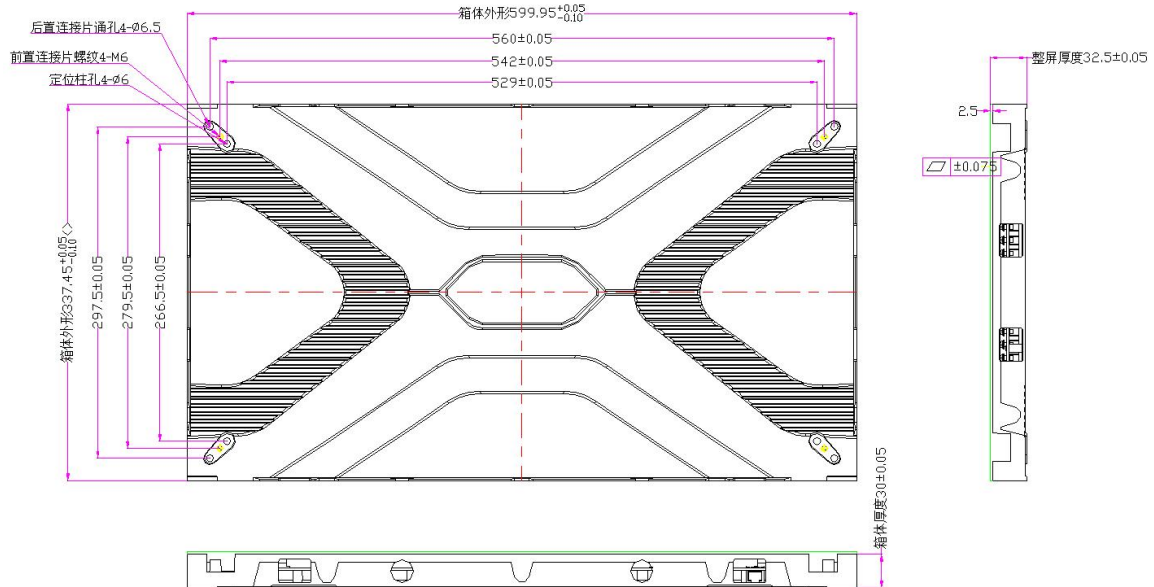


Side View



Side View

6. Cabinet Dimension Structure



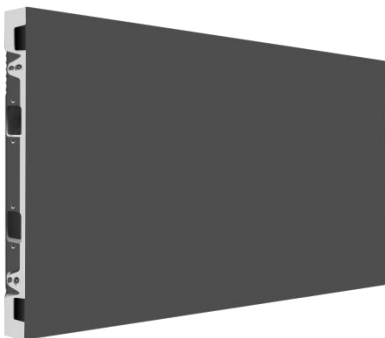
7. Cabinet Picture



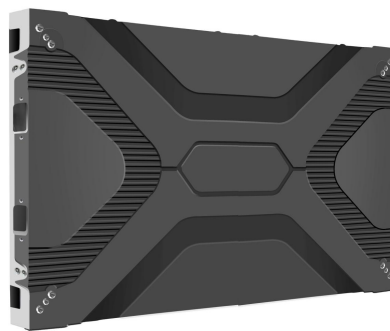
Front View



Back View



Side View



Side View

8. All-In-One LED Solution Picture



Front View



Back View



Side View

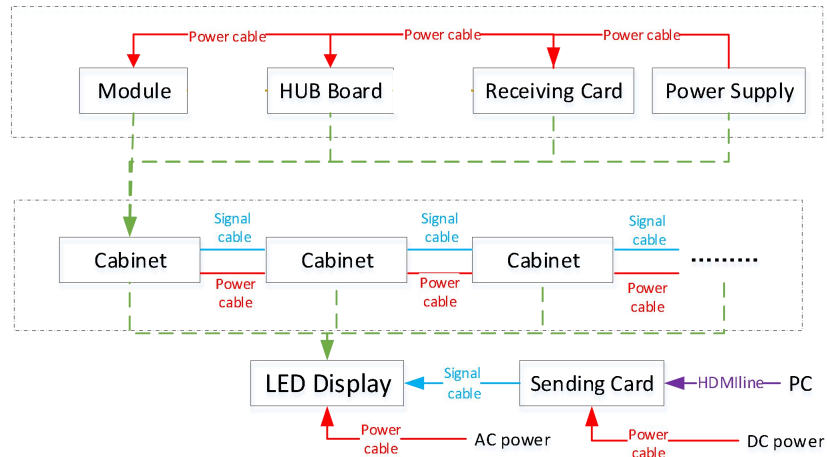


Side View

9. Technical Parameter

| COB All-In-One Size | | 81" | 108" | 135" | 162" | |
|--------------------------------------|--|--|--------------------------------------|----------------------|----------------------|----------------------|
| Technical | Pixel Pitch (mm) | 0.93 | 1.25 | 1.56 | 1.87 | 0.93 |
| | Dot to Dot Resolution | 2K(1920×1080) | 2K(1920×1080) | 2K(1920×1080) | 2K(1920×1080) | 4K(3840×2160) |
| | Physical Density (dot/m ²) | 1,137,778 | 640,000 | 409,600 | 284,444 | 1,137,778 |
| | Module Size (W ×H ×D) mm | 150*168.75 | 150*168.75 | 150*168.75 | 150*168.75 | 150*168.75 |
| | Module Resolution (W ×H) | 160*180 | 120*135 | 96*108 | 80*90 | 160*180 |
| | Packaging Process | COB Flip Chip | | | | |
| | Cabinet Size (W ×H ×D) mm | 600*337.5*32.5 | 600*337.5*32.5 | 600*337.5*32.5 | 600*337.5*32.5 | 600*337.5*32.5 |
| | Cabinet resolution (W×H) dot | 640*360 | 480*270 | 384*216 | 320*180 | 640*360 |
| | Cabinet Material | Die-casting aluminum | | | | |
| | Scanning Mode | 1/60 | 1/45 | 1/48 | 1/30 | 1/60 |
| | Grey Scale (Bit) | 14Bit+Control Software 2Bit=16Bit | | | | |
| | Protection Level | LED Lamp side IP65 | | | | |
| | Installation/Service Method | Front or back installation/Front service | | | | |
| | Optical | Brightness | 600-3000cd/m ² adjustable | | | |
| Color Temperature | | 3200-9300K adjustable | | | | |
| Brightness Uniformity | | ≥98% | | | | |
| Color Uniformity | | Within 0.003Cx, Cy | | | | |
| Horizontal/Vertical View Angle | | 160° (±10°) | | | | |
| Contrast Ratio | | ≥10000:1 | | | | |
| Color Calibration of Single Dot | | Yes | | | | |
| Brightness Calibration of Single Dot | | Yes | | | | |
| Operation | Drive Mode | Constant Current Drive | | | | |
| | Standard Receiving Card | A7S | A5S-PLUS | A5S-PLUS | A5S-PLUS | A7S |
| | Refresh Frame Frequency | 50/60 Hz | | | | |
| | Max Refresh Rate | ≥2880Hz | ≥3840Hz | ≥3840Hz | ≥3840Hz | ≥2880Hz |
| | Network Connection Port | RJ45 | | | | |
| | Input Voltage AC | 110-220V | | | | |
| | Module Max Current DC | DC4.2V | DC4.2V | DC4.2V | DC4.2V | DC4.2V |
| | Module Input Voltage DC | 2.5A | 2.5A | 2.5A | 2.5A | 2.5A |
| | Cabinet Max Power Consumption | ≤450W/m ² | ≤450W/m ² | ≤450W/m ² | ≤450W/m ² | ≤450W/m ² |
| | Cabinet Aver. Power Consumption | ≤150W/m ² | ≤150W/m ² | ≤150W/m ² | ≤150W/m ² | ≤150W/m ² |
| | Working Temperature | -20℃~+50℃ | | | | |
| | Working Humidity | 10%~95%RH | | | | |

10.Connecting Diagram



11.Packing and After-sale Service

11.1 Packing

Plywood case/Honeycomb carton/Flight case option



11.2 After-sale Service

If need any help during using Vision display, please for free to contact your salesman.