

High Quality With Global Standards, CE EMCB,RoHs,FCC,UL Certificated.

Specification

	Outdoor				
Pixel Pitch	10mm	8mm	6.67mm	5.33MM	4MM
LED type	SMD3535	SMD3535	SMD2727	SMD1921	SMD1921
Density(Dots/m ²)	10000	15625	22477	35156	62500
Scan	1/2	1/4	1/6	1/7	1/10
Cabinet Resolution	96x96	120x120	144x144	192X192	240X240
Module Resolution	32x32	40x40	48x48	60X60	80X80
Waterproof Grade	IP65				
Brightness	4500-7000 Nits				
Cabinet Weight	26 kg/pcs				
Module Size	320x320mm				
Cabinet Size	960x960x92mm				
Material	Aluminum				
View Angle	160 Degree(Horizontal) 140 Degree(Vertical)				
Refresh Rate	1920-3840HZ				
Digital Processing	14/16 Bits				
Gray Scale	16384/65536 Level				
Colors	687 Million				
Color Temperature	4500-8500 Adjuststable				
Brightness Control	255N/A				
Contrast Ratio	4000:1				
Control Mode	Sync				
Life Time	100,000 Hours				

RGX(Prevision) RE-960H

FA-960:P10/P8/P6.67/P5/P4

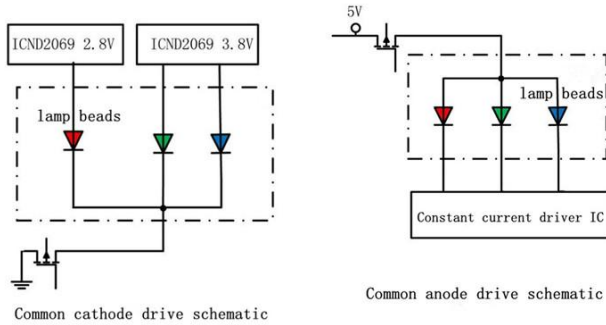


Outdoor LED display with front and back maintenance and flexible assembly.

RGX (Prevision) RE-960H Series Outdoor LED Display is the latest product from RGX (Prevision), featuring a unique design and advanced features. With its removable back cover, this display offers improved visual effects, delivering clean images and videos with uniform color.

Energy-efficient:

The outdoor energy-saving LED display screen is designed to be energy-efficient, reducing power consumption without sacrificing image quality. This results in lower energy costs and a reduced carbon footprint.



Energy Saving 40% than normal LED display

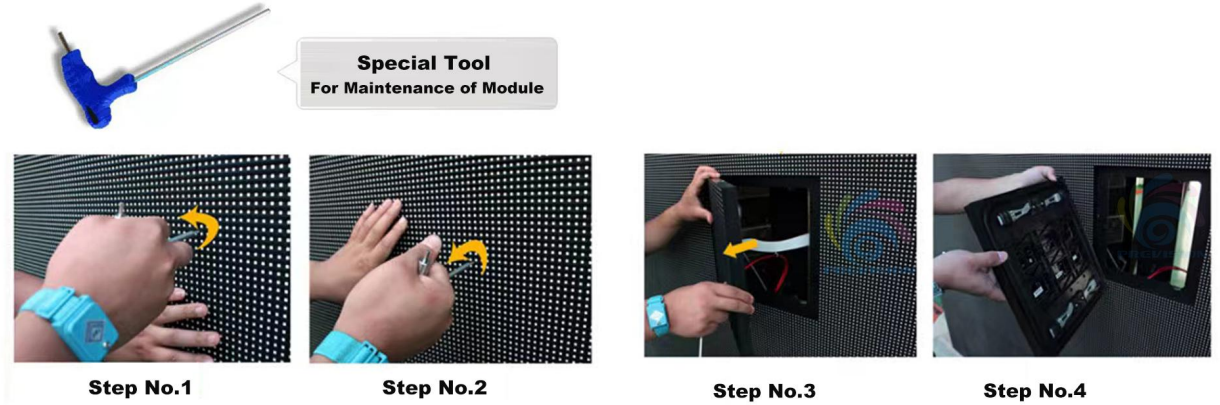
Weather-resistant:

The outdoor energy-saving LED display screen is built to withstand harsh weather conditions, such as rain, snow, wind, and extreme temperatures. This ensures that the display remains operational and visible even in adverse weather conditions.



Easy maintenance:

Modular Design: The display screen should have a modular design, allowing for easy maintenance and repair, and enabling the addition or replacement of modules as needed.

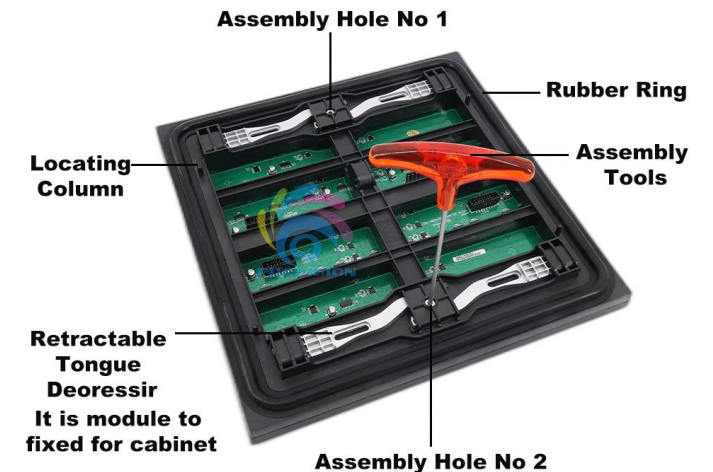


● Total 4 Steps To Remove The Module takes 5 Seconds

HIGH QUALITY MODULE

- 1.The aluminum material also provides excellent heat dissipation, which helps to prolong the lifespan of the LED display and prevent overheating
- 2.Lightweight: Despite their durability, outdoor LED aluminum modules are lightweight, making them easy to transport, install, and maintain.

Front maintenance Module Detail



Stadium Football Outdoor Fixed LED Display Screen

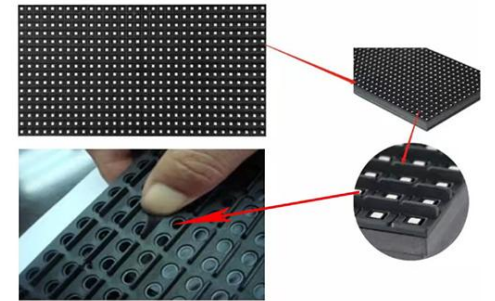
- 1.The Cabinet and module are constructed with premium-grade aluminum, providing excellent heat dissipation and durability.
- 2.The highly modular design ensures exceptional water resistance, with a waterproof rating of IP65.
- 3.To enhance athlete safety, anti-collision cotton is added to the top of the cabinet, and the module mask is made of silicone material for superior protection.

Cabinet Details



- **Protection Pad**
Features a unique upholstered design keep people safe even if people collide

- **Soft Mask**
Silicone mask protects personnel from damage



Stadium Football Aluminum Cabinet

Detail Picture Of the Cabinet



- **Mounting Bracket**
The Angle Of The Mounting Bracket Can Be 0 to 90 Degrees

- **Waterproof Level**
Design The Structure Of The Cabinet, Waterproof Level:IP65



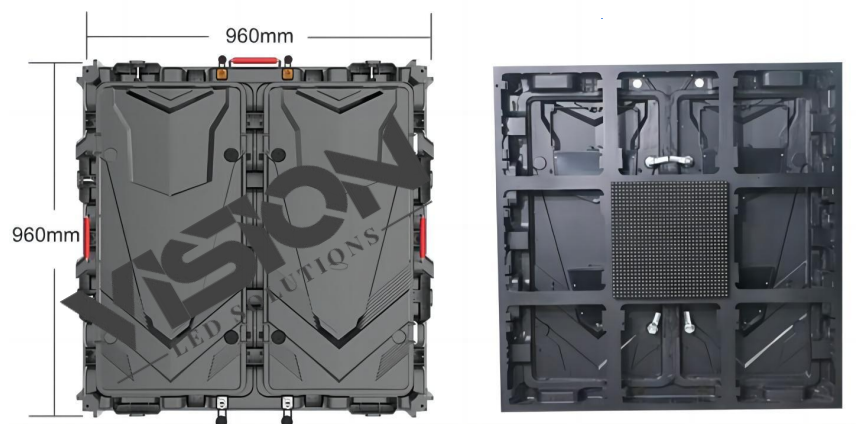
More Angles More Views

Waterproof Level:IP65

Standard outdoor display screen

Standard size LED Module:

1. Standard LED cabinet design with dimensions of 960x960mm and LED module size of 320x320mm.
2. The module supports front and rear maintenance, boasts low power consumption, and exhibits strong stability.

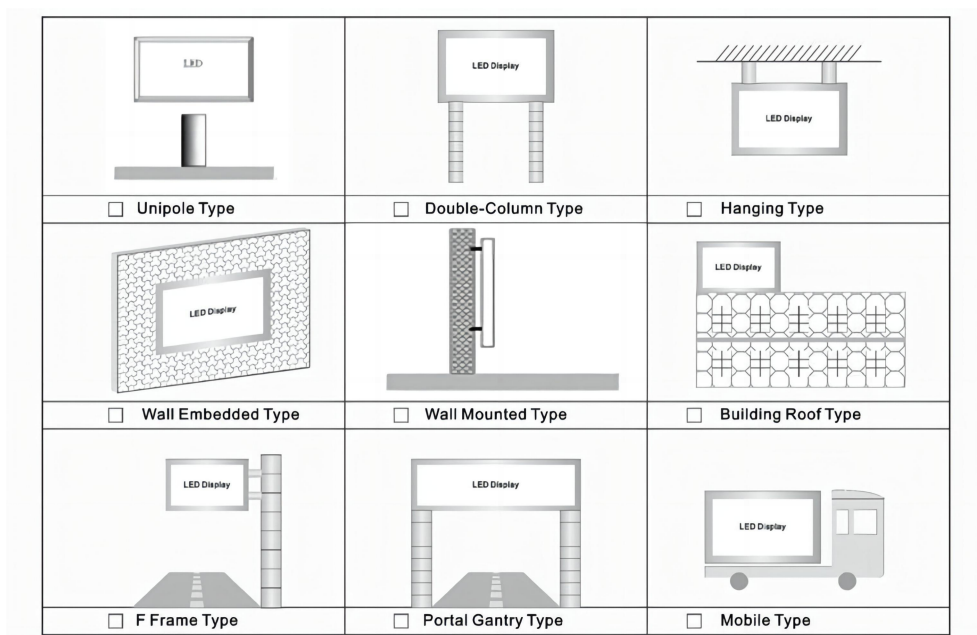


- 320x320mm LED Module series
P4MM/P5.3MM
P6.67MM/P8MM/P10MM



This LED module measures 320x320mm and is compatible with P4, P5.3, P6.67, P8, and P10 displays.

Detailed Cabinet Design Specifications



Various installation methods are available for outdoor LED display installation.

Naked-eye 3D Right Angle Outdoor LED Display